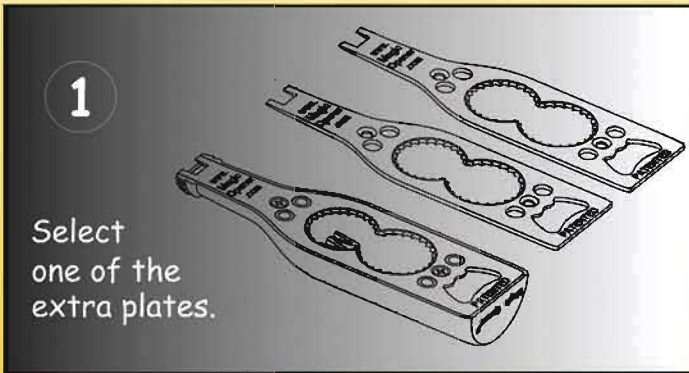
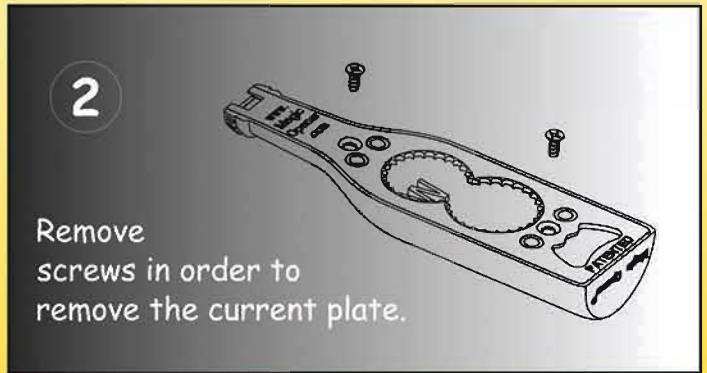


INSTRUCTIONS TO REPLACE THE METAL PLATE

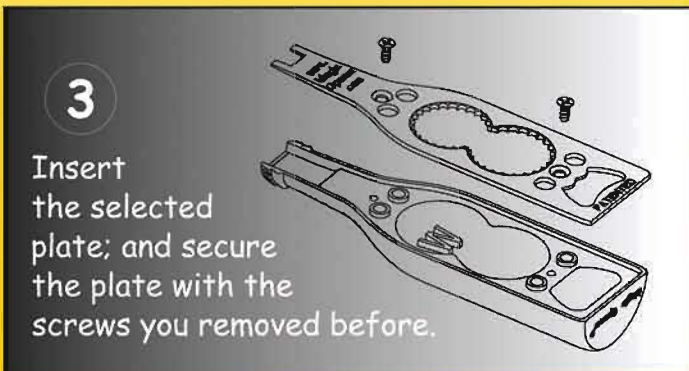
One minute of preparation for a complete enjoyable life



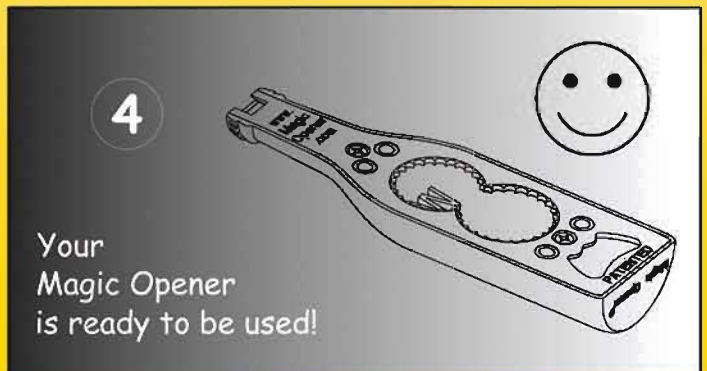
1
Select one of the extra plates.



2
Remove screws in order to remove the current plate.



3
Insert the selected plate; and secure the plate with the screws you removed before.



4
Your Magic Opener is ready to be used!

Congratulations. Opening small, medium or large Water or Soda plastic bottles from all different brands and stores will be just a snap for you now.

Your Magic Opener comes with the most used twist-off caps size installed. However because water bottles has so many different twist-off cap sizes, if the one installed is not the right size of your favorite water bottle, then please select the most appropriate and just replace it so you'll be able to use it all the time with your favorite brands. If you dont have your extra Interchangeable plates as yet, you can order them at: magicOpener.com Once you get them, follow instructions on top of this page and you'll be set in just a blink of an eye.

What can I open with the New Magic Opener?

Now you will easily open:

All Coca Cola new twist-off caps

All Water bottles from: Costco, Sam's, BJ's, Wal-Mart, all different Supermarkets, Drug Stores, Convenient Stores and Gas Stations.



All different Plastic bottles with small, medium, standard and slightly larger twist-off Plastic caps from USA, South America, Europe and Asia.

Easily opens all aluminum tab-top beer cans and all beer glass bottles

All different aluminum pull tab soda cans from Europe, USA, South America, Asia, and India.

All traditional glass bottles with metal twist-off caps and regular metal caps

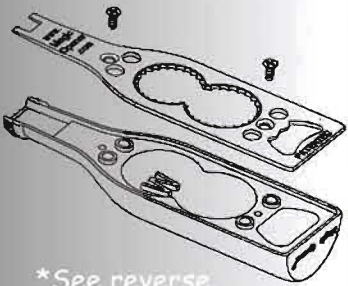
INSTRUCTIONS FOR THE MAGIC OPENER®

One minute of preparation for a complete enjoyable life

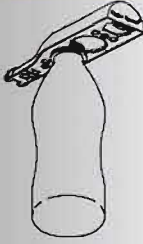
Soda and Beer
Aluminum Can Opener:
Just slide the can tab into slot. Then lift up the Magic Opener, and can is open.



Interchangeable Metal Plate:
Different brands of water use caps of different sizes. You can replace the metal plate according to your favorite brand of water. *See reverse.



Water Bottle Cap Opener:
Securely grips the water bottle cap. Just twist and open it. The "W" reminds of the place for Water.



U.S. Standard Bottle Cap Opener:
Securely grips most bottle caps. Just twist and open it.



Four Metallic Magnets:
The Magic Opener easily sticks to steel surfaces such as your refrigerator door.



Glass Bottle Opener:
Opens traditional glass bottle tin caps.

